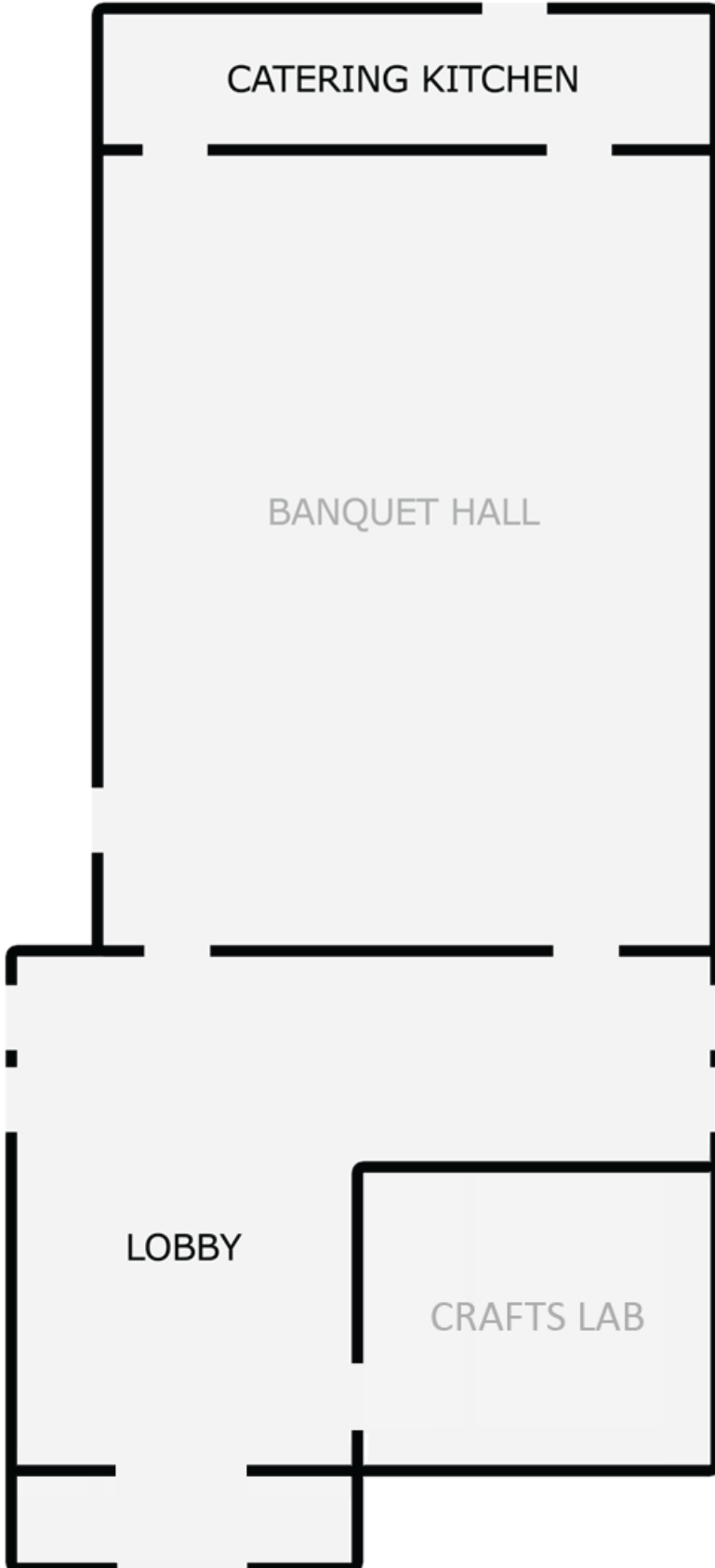


# BEN ROBERTSON COMMUNITY CENTER - FLOOR PLAN

2753 Watts Drive, Kennesaw, Georgia 30144 • 770-422-9714 • 678-460-3373 fax • [www.kennesawparksandrec.com](http://www.kennesawparksandrec.com)



## Banquet Hall



6' Round Banquet Table: seats 8-10  
(Please indicate # of chairs around table)



3' x 6' Rectangular Table - seats 6  
(Include # of chairs around table)



Dance Floor (size accordingly)

## Meeting Room/Crafts Lab



5' Round Banquet Table: seats 6-8  
(Please indicate # of chairs around table)



3' x 6' Rectangular Table - seats 6  
(Include # of chairs around table)

If you need chairs setup without tables, e.g., around the Dance Floor or theater style for a meeting, be sure to indicate the location and # of chairs required.

